

iglidur® MDM Double Flange Bearing – clip in, finished



Large flange surfaces

Symmetrical flange

Easy assembly

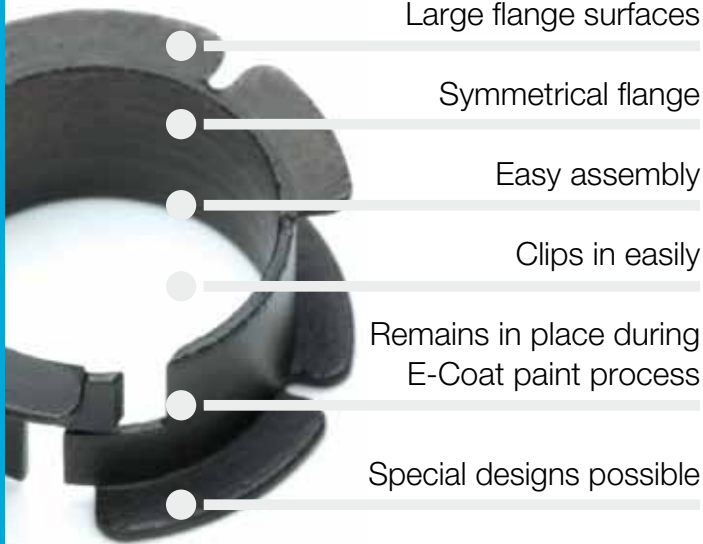
Clips in easily

Remains in place during E-Coat paint process

Special designs possible

iglidur® MDM Double Flange Bearing

Clip-in double flange bearing with symmetrical flange. The large second flange allows the bearing to take high axial forces, and the bearing is secure even when fitted to wide toleranced bores.



When to use it?

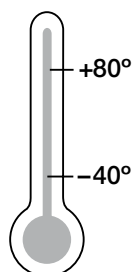
- When the axial security of an iglidur® clip bearing is not sufficient
- When there is a housing with very wide tolerance
- For high axial loads



When not to use it?

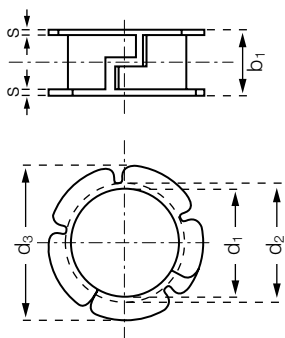
- When an automated assembly is required
 - ▶ **iglidur® MKM, page 513**
- When the iglidur® clip bearings offer adequate fit
 - ▶ **iglidur® clip bearings, page 503**
- When a large bearing length is required
 - ▶ **iglidur® MKM, page 513**

Temperature



iglidur® Double Flange Bearing | Product Range

Double Flange Bearing



Order key

MDM-1213-06



Sheet metal thickness
Outer diameter d2
Inner diameter d1
Metric
Type (Form D)
Material iglidur® M250

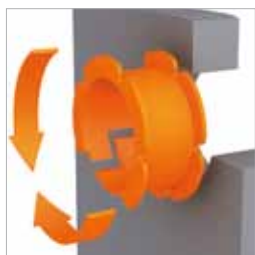


Material:

iglidur® M250 ► page 107

Dimensions [mm]

Part number	d1	d2	d3	b1	s
MDM-1213-06	12	13	16.5	7	0.5



delivery available
time from stock



prices price list online
www.igus.co.uk/en/mdm



order part number
example MDM-1213-06

My Sketches

